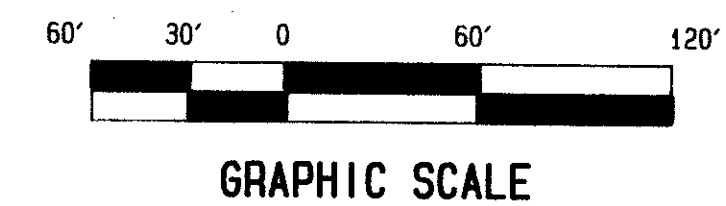
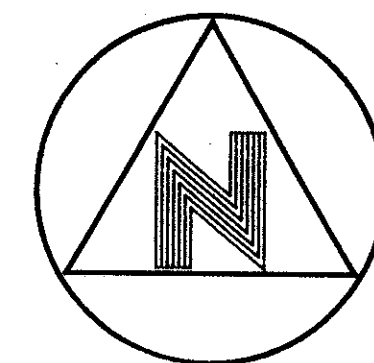
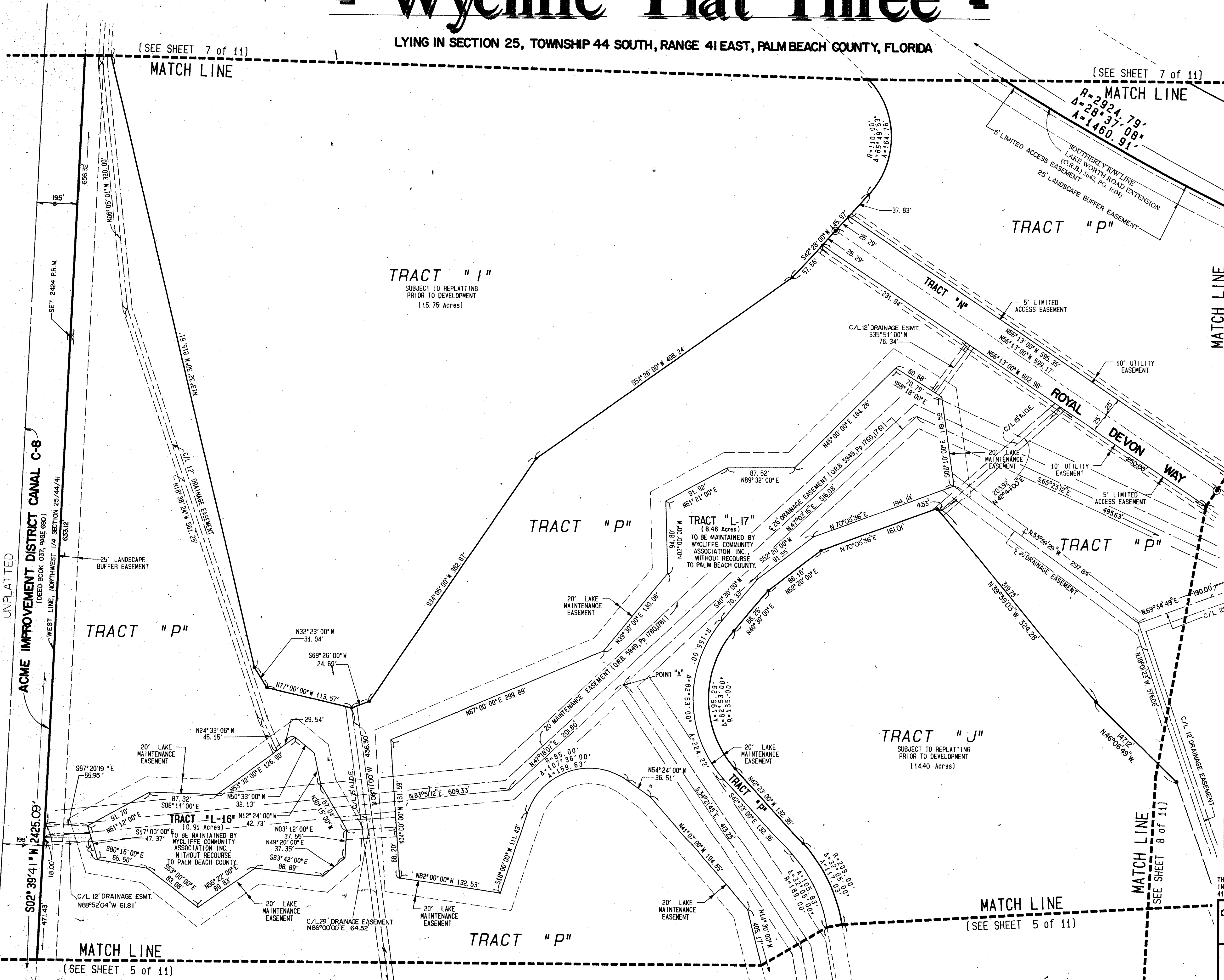
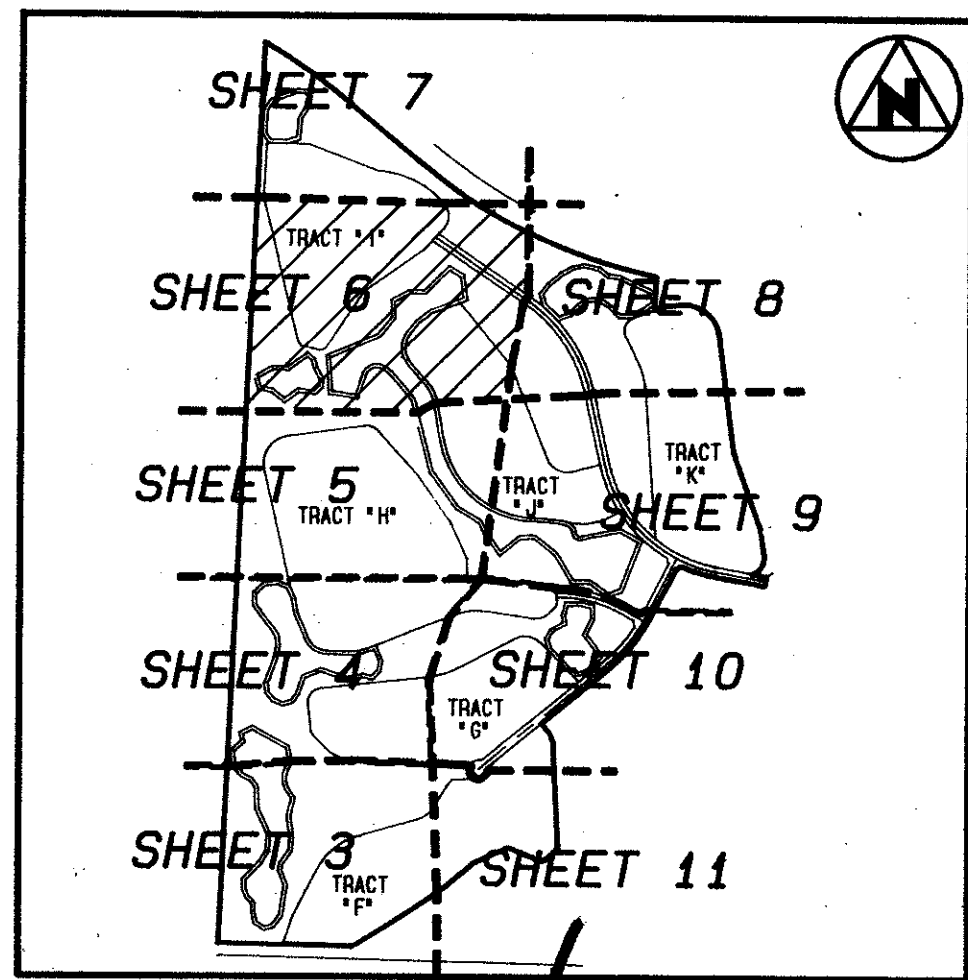


- Wycliffe Plat Three -

LYING IN SECTION 25, TOWNSHIP 44 SOUTH, RANGE 41 EAST, PALM BEACH COUNTY, FLORIDA



- LEGEND:**
- A.I.D.E. INDICATES ACME IMPROVEMENT DISTRICT EASEMENT
 - C/L INDICATES CENTERLINE
 - O.R.B. INDICATES OFFICIAL RECORDS BOOK
 - P.C.P. INDICATES A PERMANENT CONTROL POINT
 - Pg. INDICATES PAGE
 - Pp. INDICATES PAGE THROUGH PAGE
 - P.R.M. INDICATES PERMANENT REFERENCE MONUMENT
 - R/W INDICATES RIGHT OF WAY
 - SEC. INDICATES SECTION
 - MON. INDICATES MONUMENT
 - P.B. INDICATES PLAT BOOK



KEY MAP
 69/39

THIS INSTRUMENT WAS PREPARED BY JAMES R. CAMPEN, R.L.S., IN AND FOR THE OFFICE OF BENCH MARK AND SURVEYING, INC., 4152 WEST BLUE HERON ROAD, VARDEN, FLORIDA 33486.

BENCH MARK
 LAND SURVEYING & MAPPING, INC.
 RIVIERA BEACH, FLORIDA WEST PALM BEACH, FLORIDA
 (407) 848-3122 (407) 783-9234

Record Plat
Wycliffe Plat Three

0520-009

FLOOD HAZARD MAP # 100B
 ZONING # 63
 SE 86-10A
 PUD NAME SANDS
 25/14/14

TAZ = 726

UNPLATTED

MATCH LINE
 (SEE SHEET 5 of 11)

MATCH LINE
 (SEE SHEET 5 of 11)

MATCH LINE
 (SEE SHEET 8 of 11)

MATCH LINE
 (SEE SHEET 8 of 11)

(SEE SHEET 7 of 11)
 MATCH LINE

(SEE SHEET 7 of 11)
 MATCH LINE